



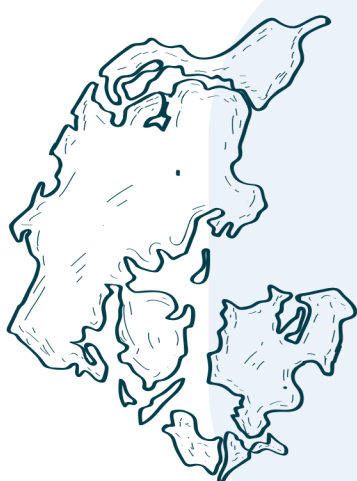
COMPOSER SPOTLIGHT



FRIEDRICH KUHLAU

1786-1832

Style: Late-classical/
Romantic



Born in Germany, Revered in Denmark

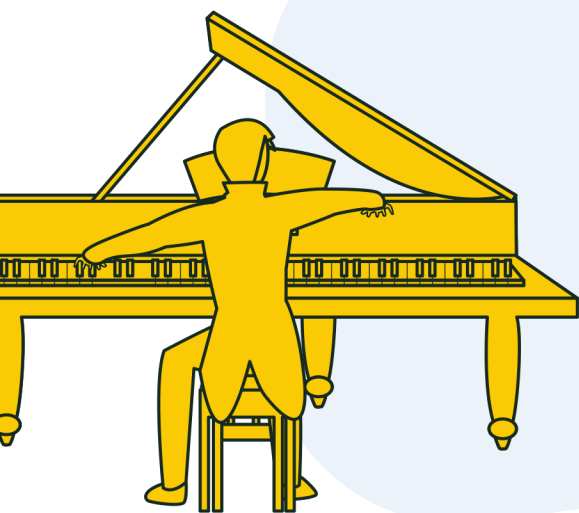
Kuhlau was born in Germany but he later became a Danish citizen. He is highly regarded in Danish history for his music for *Elves' Hill*.

Overcoming Adversity

Kuhlau didn't always have an easy life. At the age of seven he lost his right eye after he slipped on ice. Later in life, his house burned down with all his unpublished music inside! Amazingly, he still managed to publish over 200 works in his lifetime.



He was a great friend of Beethoven!



Pianist and Opera Composer

He made his debut in 1804 and began working as a concert pianist. He was also known for composing Danish opera. His sonatinas for piano also became quite popular in Denmark and abroad.

A Musical Family

His father, grandfather, and uncle were military oboists. Kuhlau also really liked the flute and composed many pieces for flute even though he couldn't play the instrument himself. He gained the nickname "the Beethoven of the flute."

