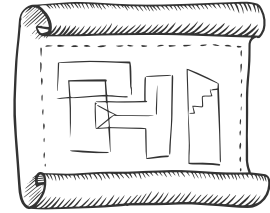


ANATOMY OF MUSIC LEVEL 1

Can you name all the parts that make up music?



A musical score in 4/4 time, consisting of two staves (treble and bass). The score is divided into two measures by a double bar line. The first measure starts with a treble clef and a bass clef. The first measure contains a whole note in the treble staff (circled B) and a whole note in the bass staff (circled D). A brace connects the two staves (D). A piano dynamic marking 'p' is present (C). The second measure contains a half note in the treble staff (circled K) and a half note in the bass staff (circled H). A forte dynamic marking 'f' is present (G). The third measure contains a quarter note in the treble staff (circled J) and a quarter note in the bass staff (circled N). A slur connects the two notes (M). The fourth measure contains a quarter note in the treble staff (circled L) and a quarter note in the bass staff (circled I). A staccato marking is present (I). A repeat sign is located at the end of the second measure (K).

_____ whole note

_____ double bar line

_____ half note

_____ brace

_____ piano

_____ quarter note

_____ repeat sign

_____ forte

_____ tie

_____ treble clef

_____ time signature

_____ bass clef

_____ slur

_____ staccato